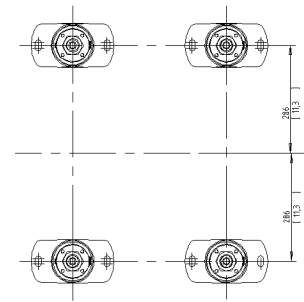
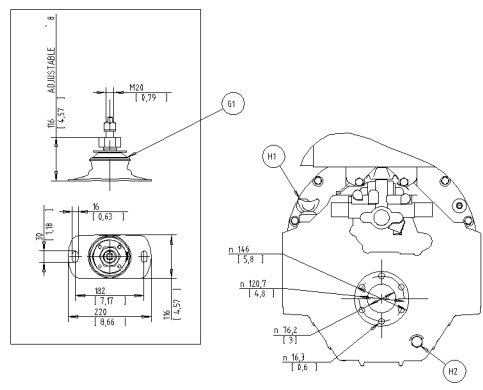
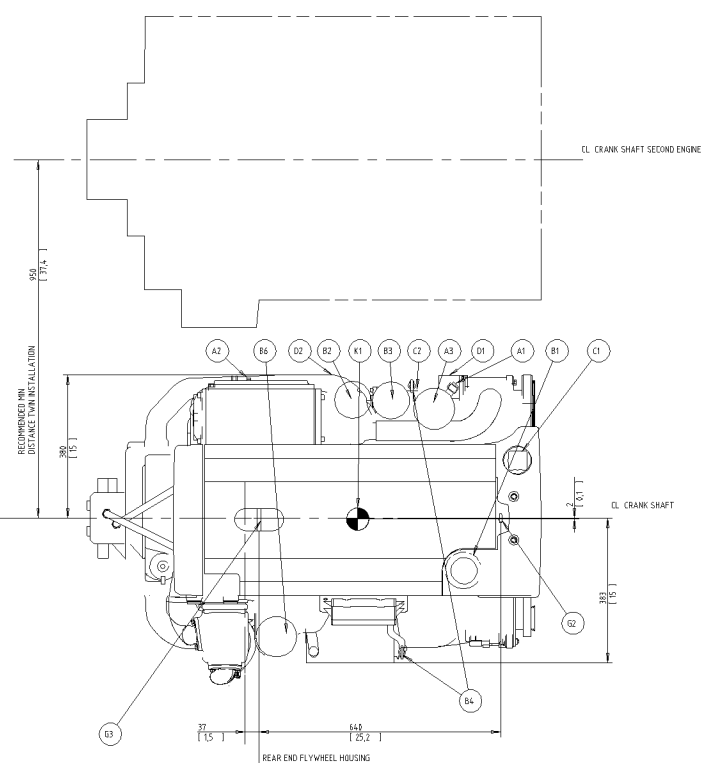


- A1 FUEL CONNECTION INLET, 10mm I.D. HOSE
- A2 FUEL CONNECTION OUTLET, 10mm I.D. HOSE
- A3 FUEL FILTER/WATER SEPARATOR
- B1 OIL FILLER ENGINE
- B2 OIL FILTER, MAIN
- B3 OIL FILTER, BYPASS
- B4 OIL DIPSTICK ENGINE PORT STANDARD, CAN BE MOVED TO STARBOARD
- B5 OUTLET FOR OIL BILGE PUMP, 12mm/1/2" I.D. HOSE
- B6 CRANK CASE VENTILATION FILTER
- C1 FRESH WATER FILLER
- C2 FRESH WATER DRAIN POINT
- C3 CONNECTION HOT WATER INLET R 1/2" (OPTION)
- C4 CONNECTION HOT WATER OUTLET R 1/2" (OPTION)
- D1 SEA WATER INLET FOR n 38 / 15" I.D. HOSE.
- D2 SEA WATER DRAIN POINT (2x)
- D3 SEA WATER PUMP
- D4 WET EXHAUST CONNECTION, 102 mm / 4" I.D. HOSE
- D5 EXHAUST RISER (OPTION)
- E1 ECU CONTROL UNIT
- E2 ENGINE STOP
- E3 DIAGNOSE CONNECTOR
- E4 DATALINK, SENDER AND AUX (2x)
- F1 AIR FILTER
- G1 ELASTIC SUSPENSION (4x)
- G2 LIFTING EYE, FRONT, n 40
- G3 LIFTING EYE, REAR, n 30
- H1 OIL DIP STICK TRANSMISSION
- H2 OIL DRAIN TRANSMISSION
- J1 POWER STEERING PUMP AL.T. EXTRA ALTERNATOR (OPTION)
- K1 CENTRE OF GRAVITY



ALL EQUIPMENT ON THE DRAWING IS NOT STANDARD  
 FOR WEIGHTS AND VOLUME PLEASE REFER TO TECHNICAL  
 DATA SALES GUIDE

SCALE 1:5

|                               |  |  |   |
|-------------------------------|--|--|---|
| VOLVO PENTA<br>21912433<br>01 |  | DIMENSIONS OPERATIONS AND GENERAL<br>DIMENSIONS<br>ENGINE DIMENSIONS<br>P/A 300 HSB/RAE<br>DIMENSION DRAWING<br>21912433<br>01 | RELEASED<br>D. 1. 1 Modified M1<br>15-42-32 |
|-------------------------------|--|--|---|